

## Anti-Phospho-TORC2 antibody (STJ502714)

STJ502714

### GENERAL INFORMATION

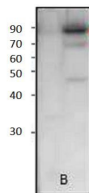
<b>Product Type</b>	Primary antibodies
<b>Short Description</b>	Rabbit polyclonal antibody anti-Phospho-TORC2 is suitable for use in ELISA, Immunoprecipitation and Western Blot research applications.
<b>Applications</b>	ELISA, IP, WB
<b>Host/Source</b>	Rabbit
<b>Reactivity</b>	Human, Mouse, Rat

### PRODUCT PROPERTIES

<b>Clonality</b>	Polyclonal
<b>Clone ID</b>	
<b>Concentration</b>	0.55-0.75 µg/µl
<b>Conjugation</b>	Unconjugated
<b>Purification</b>	Affinity Purified
<b>Dilution Range</b>	WB: 1:500 ELISA: 1:10, 000 IP: 1:200
<b>Formulation</b>	
<b>Isotype</b>	IgG
<b>Storage Instruction</b>	Store at -20°C for long term storage. Avoid freeze-thaw cycles.

### TARGET INFORMATION

<b>Gene ID</b>	<a href="#">200186</a>
<b>Gene Symbol</b>	<a href="#">CRTC2</a>
<b>Uniprot ID</b>	<a href="#">CRTC2_HUMAN</a>
<b>Immunogen</b>	Phosphorylated synthetic peptide corresponding to unique amino acid sequence on TORC2 protein.
<b>Immunogen Region</b>	
<b>Specificity</b>	
<b>Immunogen Sequence</b>	



Western blot with Anti-Phospho-TORC2 Antibody (STJ502714) on 1) Control chondrocytes, 2) Blueberry treated chondrocytes. Antibody at 1:500 dilution in buffer.