

## Anti-Phospho-STAT1 antibody (700-750) (STJ502693)

STJ502693

### GENERAL INFORMATION

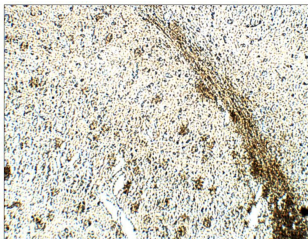
<b>Product Type</b>	Primary antibodies
<b>Short Description</b>	Rabbit polyclonal antibody anti-Phospho-STAT1 (700-750) is suitable for use in ELISA, Immunohistochemistry, Immunoprecipitation and Western Blot research applications.
<b>Applications</b>	ELISA, IHC, IP, WB
<b>Host/Source</b>	Rabbit
<b>Reactivity</b>	Human, Mouse, Rat

### PRODUCT PROPERTIES

<b>Clonality</b>	Polyclonal
<b>Clone ID</b>	
<b>Concentration</b>	0.5 µg/µl
<b>Conjugation</b>	Unconjugated
<b>Purification</b>	Affinity Purified
<b>Dilution Range</b>	WB: 1:500 ELISA: 1:10, 000 IP: 1:150 IHC: 1:50-1:100
<b>Formulation</b>	
<b>Isotype</b>	IgG
<b>Storage Instruction</b>	Store at -20°C for long term storage. Avoid freeze-thaw cycles.

### TARGET INFORMATION

<b>Gene ID</b>	6772
<b>Gene Symbol</b>	STAT1
<b>Uniprot ID</b>	STAT1_HUMAN
<b>Immunogen</b>	Synthetic peptide taken within amino acid region 700-750 on human STAT1 protein. Phosphorylated Serine 727 residue.
<b>Immunogen Region</b>	700-750
<b>Specificity</b>	
<b>Immunogen Sequence</b>	



Immunohistochemistry of mouse brain with Anti-Phospho-STAT1 primary antibody (STJ502693) at 1:50 dilution in Buffer. Section was treated with DAB and Haematoxylin stain. Magnification is at 20X.