

Anti-PROM2 antibody (315-338) (STJ502662)

STJ502662

GENERAL INFORMATION

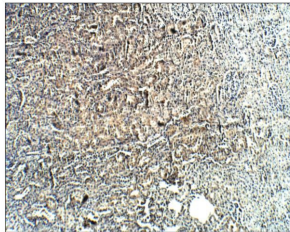
Product Type	Primary antibodies
Short Description	Rabbit polyclonal antibody anti-PROM2 (315-338) is suitable for use in ELISA, Immunohistochemistry, Immunoprecipitation and Western Blot research applications.
Applications	ELISA, IHC, IP, WB
Host/Source	Rabbit
Reactivity	Human, Mouse, Rat

PRODUCT PROPERTIES

Clonality	Polyclonal
Clone ID	
Concentration	0.65 µg/µl
Conjugation	Unconjugated
Purification	Affinity Purified
Dilution Range	WB: 1:500 DB: 1:2, 000 ELISA: 1:2, 000 IP: 1:200 IHC: 1:100 ICC: 1:100 IF: 1:100 CFM: 1:100
Formulation	
Isotype	IgG
Storage	Store at -20°C for long term storage. Avoid freeze-thaw cycles.
Instruction	

TARGET INFORMATION

Gene ID	150696
Gene Symbol	PROM2
Uniprot ID	PROM2_HUMAN
Immunogen	Synthetic peptide corresponding to Human Prominin 2 amino acids 315-338.
Immunogen Region	315-338
Specificity	
Immunogen Sequence	



Immunohistochemistry of rat kidney with Anti-PROM2 primary antibody (STJ502662) at 1:100 dilution in buffer. Section was treated with DAB and Haematoxylin stain. Magnification is at 10X.