

Anti-Prominin 1 antibody (700-730) (STJ502660)

STJ502660

GENERAL INFORMATION

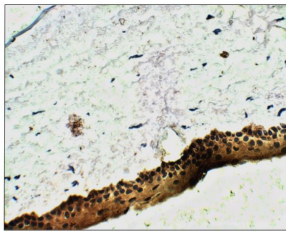
Product Type	Primary antibodies
Short Description	Rabbit polyclonal antibody anti-Prominin 1 (700-730) is suitable for use in ELISA, Immunohistochemistry, Immunoprecipitation and Western Blot research applications.
Applications	ELISA, IHC, IP, WB
Host/Source	Rabbit
Reactivity	Human, Mouse, Rat

PRODUCT PROPERTIES

Clonality	Polyclonal
Clone ID	
Concentration	0.50-0.95 µg/µl
Conjugation	Unconjugated
Purification	Affinity Purified
Dilution Range	WB: 1:500-1:1,000 DB: 1:2,000 ELISA: 1:2,000 IHC: 1:100
Formulation	
Isotype	IgG
Storage Instruction	Store at -20°C for long term storage. Avoid freeze-thaw cycles.

TARGET INFORMATION

Gene ID	
Gene Symbol	
Uniprot ID	
Immunogen	Synthetic peptide taken within amino acid regions 700-730 on CD133 protein
Immunogen Region	700-730
Specificity	
Immunogen Sequence	



Immunohistochemistry of rat tissue with Anti-Prominin 1 primary antibody (STJ502660) at 1:100 dilution in Buffer. Section was treated with DAB and Haematoxylin stain.