

Anti-PRL antibody (1-100) (STJ502654)

STJ502654

GENERAL INFORMATION

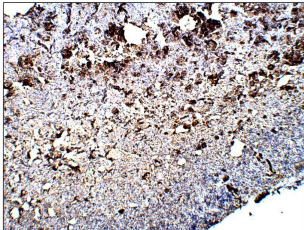
Product Type	Primary antibodies
Short Description	Rabbit polyclonal antibody anti-PRL (1-100) is suitable for use in Confocal Microscopy, ELISA, Immunocytochemistry, Immunohistochemistry, Immunofluorescence and Western Blot research applications.
Applications	CM, ELISA, ICC, IHC, IF, WB
Host/Source	Rabbit
Reactivity	Human, Mouse, Rat

PRODUCT PROPERTIES

Clonality	Polyclonal
Clone ID	
Concentration	0.7 µg/µl
Conjugation	Unconjugated
Purification	Affinity Purified
Dilution	WB: 1:500
Range	DB: 1:50, 000 ELISA: 1:50, 000 IHC: 1:100 ICC: 1:100 CFM: 1:100
Formulation	
Isotype	IgG
Storage Instruction	Store at -20°C for long term storage. Avoid freeze-thaw cycles.

TARGET INFORMATION

Gene ID	5617
Gene Symbol	PRL
Uniprot ID	PRL_HUMAN
Immunogen	Synthetic peptide taken within amino acid region 1-100 on human Prolactin protein.
Immunogen Region	1-100
Specificity	
Immunogen Sequence	



Immunohistochemistry of human tissue with Anti-PRL primary antibody (STJ502654) at 1:100 dilution in Buffer. Section was treated with DAB and Haematoxylin stain. Magnification is at 5X.

This product is suitable for in-vitro studies under the RESEARCH USE ONLY [RUO] licence. This product must not be used as for diagnostic or other medical purposes.
St John's Laboratory Ltd, Knowledge Dock Business Centre, University Way, London, E16 2RD | Tel: 0208 223 3081