

Anti-Phospho-PRP19 antibody (200-300) (STJ502636)

STJ502636

GENERAL INFORMATION

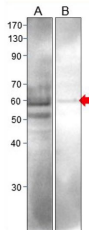
Product Type	Primary antibodies
Short Description	Rabbit polyclonal antibody anti-Phospho-PRP19 (200-300) is suitable for use in ELISA and Western Blot research applications.
Applications	ELISA, WB
Host/Source	Rabbit
Reactivity	Human, Mouse

PRODUCT PROPERTIES

Clonality	Polyclonal
Clone ID	
Concentration	0.50-0.75 µg/µl
Conjugation	Unconjugated
Purification	Affinity Purified
Dilution Range	WB: 1:500-1:1,000 DB: 1:2,000 ELISA: 1:2,000
Formulation	
Isotype	IgG
Storage Instruction	Store at -20°C for long term storage. Avoid freeze-thaw cycles.

TARGET INFORMATION

Gene ID	246216
Gene Symbol	Prpf19
Uniprot ID	PRP19_RAT
Immunogen	Phosphorylated synthetic peptide taken within amino acid region 200-300 on rat PRP19F protein.
Immunogen Region	200-300
Specificity	
Immunogen Sequence	



Western blot with Anti-Phospho-PRP19 Antibody (STJ502636) on RA induced SHSY5Y cells. A) STJ502669, B) STJ502636. Antibodies diluted at 1:500.

This product is suitable for in-vitro studies under the RESEARCH USE ONLY [RUO] licence. This product must not be used as for diagnostic or other medical purposes.
St John's Laboratory Ltd, Knowledge Dock Business Centre, University Way, London, E16 2RD | Tel: 0208 223 3081