

## Anti-Phospho-PDE7A antibody (STJ502624)

STJ502624

### GENERAL INFORMATION

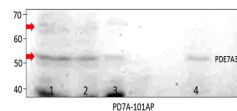
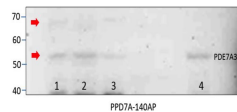
<b>Product Type</b>	Primary antibodies
<b>Short Description</b>	Rabbit polyclonal antibody anti-Phospho-PDE7A is suitable for use in ELISA, Immunoprecipitation and Western Blot research applications.
<b>Applications</b>	ELISA, IP, WB
<b>Host/Source</b>	Rabbit
<b>Reactivity</b>	Human, Mouse, Rat

### PRODUCT PROPERTIES

<b>Clonality</b>	Polyclonal
<b>Clone ID</b>	
<b>Concentration</b>	0.50-0.75 µg/µl
<b>Conjugation</b>	Unconjugated
<b>Purification</b>	Affinity Purified
<b>Dilution Range</b>	WB: 1:500 ELISA: 1:10, 000 IP: 1:250
<b>Formulation</b>	
<b>Isotype</b>	IgG
<b>Storage Instruction</b>	Store at -20°C for long term storage. Avoid freeze-thaw cycles.

### TARGET INFORMATION

<b>Gene ID</b>	18583
<b>Gene Symbol</b>	Pde7a
<b>Uniprot ID</b>	PDE7A_MOUSE
<b>Immunogen</b>	Phosphorylated Synthetic cyclic peptide common to all PDE7A variants
<b>Immunogen Region</b>	
<b>Specificity</b>	This antibody is specific for PDE7A variants and will not cross-react with PDE7B or other PDE family members.
<b>Immunogen Sequence</b>	



Western blot with Anti-Phospho-PDE7A Antibody (STJ502624) on 1) SKNMBE cells, 2) MCF7 cells, 3) Hu cells and 4) Rat testis. Top - using STJ502624. Bottom - Phospho antibody, STJ502365.

This product is suitable for in-vitro studies under the RESEARCH USE ONLY [RUO] licence. This product must not be used as for diagnostic or other medical purposes.  
St John's Laboratory Ltd, Knowledge Dock Business Centre, University Way, London, E16 2RD | Tel: 0208 223 3081