

Anti-Phospho-PDE4D PKA site-S190 antibody (50-100) (STJ502613)

STJ502613

GENERAL INFORMATION

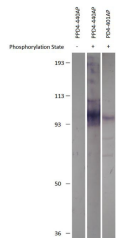
Product Type	Primary antibodies
Short Description	Rabbit polyclonal antibody anti-Phospho-PDE4D PKA site-S190 (50-100) is suitable for use in ELISA, Immunohistochemistry, Immunoprecipitation and Western Blot research applications.
Applications	ELISA, IHC-P, IP, WB
Host/Source	Rabbit
Reactivity	Human, Mouse, Rat

PRODUCT PROPERTIES

Clonality	Polyclonal
Clone ID	
Concentration	0.57 µg/µl
Conjugation	Unconjugated
Purification	Affinity Purified
Dilution Range	WB: 1:500 DB: 1:10, 000 ELISA: 1:10, 000 IP: 1:150 IHC: 1:50-1:100
Formulation	
Isotype	IgG
Storage Instruction	Store at -20°C for long term storage. Avoid freeze-thaw cycles.

TARGET INFORMATION

Gene ID	5144
Gene Symbol	PDE4D
Uniprot ID	PDE4D_HUMAN
Immunogen	Synthetic peptide selective for PDE4D PKA site taken within amino acid region 50-100 on human PDE4D8 protein. Phosphorylated Serine 190 residue. Derived around the PKA phosphorylation site of serine 190: R-E-SP-F-L
Immunogen Region	50-100
Specificity	Detects endogenous levels of PDE4D only when phosphorylated at serine 190.
Immunogen Sequence	



Western blot with Anti-Phospho-PDE4D PKA site (S190) Antibody (STJ502613) with phosphorylated and non-phosphorylated PDE4D3 protein. PDE43 is phosphorylated by catalytic subunit of PKA.

This product is suitable for in-vitro studies under the RESEARCH USE ONLY [RUO] licence. This product must not be used as for diagnostic or other medical purposes.
St John's Laboratory Ltd, Knowledge Dock Business Centre, University Way, London, E16 2RD | Tel: 0208 223 3081