

Anti-Phospho-PDE4A antibody (STJ502612)

STJ502612

GENERAL INFORMATION

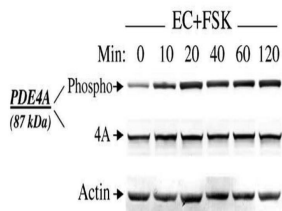
Product Type	Primary antibodies
Short Description	Rabbit polyclonal antibody anti-Phospho-PDE4A is suitable for use in ELISA, Immunoprecipitation and Western Blot research applications.
Applications	ELISA, IP, WB
Host/Source	Rabbit
Reactivity	Human, Mouse, Rat

PRODUCT PROPERTIES

Clonality	Polyclonal
Clone ID	
Concentration	0.57 µg/µl
Conjugation	Unconjugated
Purification	Affinity Purified
Dilution Range	WB: 1:500 DB: 1:10, 000 ELISA: 1:10, 000 IP: 1:150
Formulation	
Isotype	IgG
Storage Instruction	Store at -20°C for long term storage. Avoid freeze-thaw cycles.

TARGET INFORMATION

Gene ID	5141
Gene Symbol	PDE4A
Uniprot ID	PDE4A_HUMAN
Immunogen	Synthetic peptide corresponding to PKA phosphorylation site on PDE4A long form enzymes. The peptide was synthesized with phosphorylated serine residue.
Immunogen Region	
Specificity	This antibody detects all known long-form variants of PDE4A, including PDE4A4, PDE4A5, PDE4A8, PDE4Ax when phosphorylated at the PKA phosphorylation site. It will not cross-react with PDE4A phosphorylated at the ERK phosphorylation site. It does not
Immunogen Sequence	



Western blot with Anti-Phospho-PDE4A Antibody (STJ502612) of rat pulmonary microvascular endothelial cells.

This product is suitable for in-vitro studies under the RESEARCH USE ONLY [RUO] licence. This product must not be used as for diagnostic or other medical purposes.
St John's Laboratory Ltd, Knowledge Dock Business Centre, University Way, London, E16 2RD | Tel: 0208 223 3081