

Anti-Phospho-PDE11A antibody (100-150) (STJ502595)

STJ502595

GENERAL INFORMATION

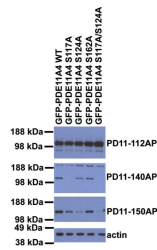
Product Type	Primary antibodies
Short Description	Rabbit polyclonal antibody anti-Phospho-PDE11A (100-150) is suitable for use in ELISA, Immunoprecipitation and Western Blot research applications.
Applications	ELISA, IP, WB
Host/Source	Rabbit
Reactivity	Human, Mouse, Rat

PRODUCT PROPERTIES

Clonality	Polyclonal
Clone ID	
Concentration	0.69 µg/µl
Conjugation	Unconjugated
Purification	Affinity Purified
Dilution Range	WB: 1:500 ELISA: 1:10, 000 IP: 1:250
Formulation	
Isotype	IgG
Storage	Store at -20°C for long term storage. Avoid freeze-thaw cycles.
Instruction	

TARGET INFORMATION

Gene ID	50940
Gene Symbol	PDE11A
Uniprot ID	PDE11_HUMAN
Immunogen	Synthetic peptide taken within amino acid region 100-150 on PDE11A protein. Phosphorylated Ser 117 & 124.
Immunogen Region	100-150
Specificity	
Immunogen Sequence	



Western blot with Anti-Phospho-PDE11A Antibody (S117 & S124) (STJ502595).

This product is suitable for in-vitro studies under the RESEARCH USE ONLY [RUO] licence. This product must not be used as for diagnostic or other medical purposes.
St John's Laboratory Ltd, Knowledge Dock Business Centre, University Way, London, E16 2RD | Tel: 0208 223 3081