

Anti-Phospho-PDE11A antibody (75-125) (STJ502594)

STJ502594

GENERAL INFORMATION

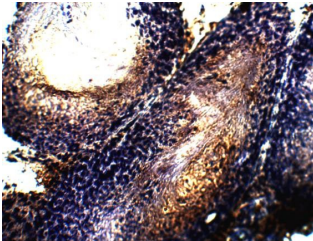
Product Type	Primary antibodies
Short Description	Rabbit polyclonal antibody anti-Phospho-PDE11A (75-125) is suitable for use in Confocal Microscopy, ELISA, Immunocytochemistry, Immunofluorescence, Immunohistochemistry, Immunoprecipitation and Western Blot research applications.
Applications	CM, ELISA, ICC, IF, IHC, IP, WB
Host/Source	Rabbit
Reactivity	Human, Mouse, Rat

PRODUCT PROPERTIES

Clonality	Polyclonal
Clone ID	
Concentration	0.69 µg/µl
Conjugation	Unconjugated
Purification	Affinity Purified
Dilution Range	WB: 1:500 ELISA: 1:10,000 IP: 1:250 IHC: 1:250 ICC: 1:250 IF: 1:250
Formulation	
Isotype	IgG
Storage Instruction	Store at -20°C for long term storage. Avoid freeze-thaw cycles.

TARGET INFORMATION

Gene ID	50940
Gene Symbol	PDE11A
Uniprot ID	PDE11_HUMAN
Immunogen	Synthetic peptide taken within amino acid region 75-125 on PDE11A protein. Phosphorylated Ser 117.
Immunogen Region	75-125
Specificity	
Immunogen Sequence	



Immunohistochemistry of rat tissue with Anti-Phospho-PDE11A primary antibody (S117) (STJ502594) at 1:50 dilution in buffer. Section was treated with DAB and Haematoxylin stain.