

Anti-PODXL antibody (200-250) (STJ502573)

STJ502573

GENERAL INFORMATION

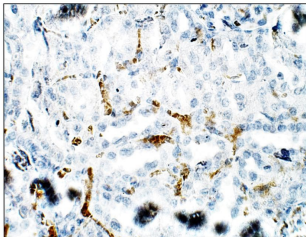
Product Type	Primary antibodies
Short Description	Rabbit polyclonal antibody anti-PODXL (200-250) is suitable for use in Dot Blot, ELISA, Immunohistochemistry, Immunoprecipitation and Western Blot research applications.
Applications	DB, ELISA, IHC, IP, WB
Host/Source	Rabbit
Reactivity	Human, Monkey, Mouse, Rat

PRODUCT PROPERTIES

Clonality	Polyclonal
Clone ID	
Concentration	0.55-0.75 µg/µl
Conjugation	Unconjugated
Purification	Affinity Purified
Dilution Range	WB: 1:500 DB: 1:4, 000 ELISA: 1:4, 000 IP: 1:150 IHC: 1:50-1:100
Formulation	
Isotype	IgG
Storage	Store at -20°C for long term storage. Avoid freeze-thaw cycles.
Instruction	

TARGET INFORMATION

Gene ID	5420
Gene Symbol	PODXL
Uniprot ID	PODXL_HUMAN
Immunogen	Synthetic peptide corresponding amino acid region 200-250 on human PODXL protein.
Immunogen Region	200-250
Specificity	This antibody will react with PODXL isoform 1 and will not detect PODXL isoform 2.
Immunogen Sequence	



Immunohistochemistry of rat kidney with Anti-PODXL primary antibody (STJ502573) at 1:100 dilution in Buffer. Section was treated with DAB and Haematoxylin stain. Magnification is at 40X.