

Anti-Phospho-KIRREL-p737/738 antibody (STJ502567)

STJ502567

GENERAL INFORMATION

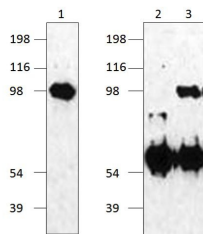
Product Type	Primary antibodies
Short Description	Rabbit polyclonal antibody anti-Phospho-KIRREL-p737/738 is suitable for use in Confocal Microscopy, ELISA, Immunocytochemistry, Immunofluorescence, Immunohistochemistry, Immunoprecipitation and Western Blot research applications.
Applications	CM, ELISA, ICC, IF, IHC, IP, WB
Host/Source	Rabbit
Reactivity	Chicken, Human, Mouse, Rat, Zebra Fish

PRODUCT PROPERTIES

Clonality	Polyclonal
Clone ID	
Concentration	0.45-0.65 µg/µl
Conjugation	Unconjugated
Purification	Affinity Purified
Dilution Range	WB: 1:250 DB: 1:10, 000 ELISA: 1:10, 000 IP: 1:250 IHC: 1:250 ICC: 1:250 IF: 1:250 CFM: 1:250
Formulation	
Isotype	IgG
Storage	Store at -20°C for long term storage. Avoid freeze-thaw cycles.
Instruction	

TARGET INFORMATION

Gene ID	170643
Gene Symbol	Kirrel1
Uniprot ID	KIRR1_MOUSE
Immunogen	Phosphorylated synthetic peptide with phospho tyrosine 737 and 738 on mouse Kin of IRRE-like protein 1.
Immunogen Region	
Specificity	Intracellular domain.
Immunogen Sequence	



Western blot with Anti-Phospho-KIRREL Antibody (STJ502567) with 1) NEPH1 peptide. Lane 2) STJ502567 with NEPH1 peptide. Lane 3) STJ502567 with PNEPH1 peptide. Antibody at 1:500 dilution in buffer.