

Anti-PMS2 antibody (220-270) (STJ502561)

STJ502561

GENERAL INFORMATION

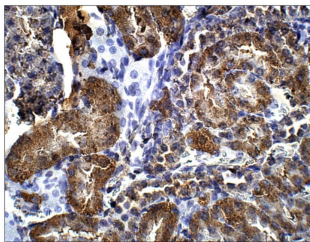
Product Type	Primary antibodies
Short Description	Rabbit polyclonal antibody anti-PMS2 (220-270) is suitable for use in ELISA, Immunohistochemistry, Immunoprecipitation and Western Blot research applications.
Applications	ELISA, IHC, IP, WB
Host/Source	Rabbit
Reactivity	Human, Mouse, Rat

PRODUCT PROPERTIES

Clonality	Polyclonal
Clone ID	
Concentration	0.65-0.69 µg/µl
Conjugation	Unconjugated
Purification	Affinity Purified
Dilution Range	WB: 1:500-1:1, 000 DB: 1:20, 000-1:50, 000 ELISA: 1:20, 000-1:50, 000
Formulation	
Isotype	IgG
Storage	Store at -20°C for long term storage. Avoid freeze-thaw cycles.
Instruction	

TARGET INFORMATION

Gene ID	5395
Gene Symbol	PMS2
Uniprot ID	PMS2_HUMAN
Immunogen	Synthetic peptide taken within amino acid region 220-270 on human Mismatch Repair endonuclease PMS2 protein.
Immunogen Region	220-270
Specificity	
Immunogen Sequence	



Immunohistochemistry of mouse kidney with Anti-PMS2 primary antibody (STJ502561) at 1:50 dilution in Buffer. Section was treated with DAB and Haematoxylin stain. Magnification is at 40X.