

Anti-Phospho-MAP3K12 antibody (270-320) (STJ502552)

STJ502552

GENERAL INFORMATION

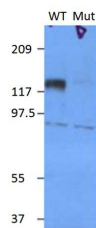
Product Type	Primary antibodies
Short Description	Rabbit polyclonal antibody anti-Phospho-MAP3K12 (270-320) is suitable for use in ELISA and Western Blot research applications.
Applications	ELISA, WB
Host/Source	Rabbit
Reactivity	Human, Rat

PRODUCT PROPERTIES

Clonality	Polyclonal
Clone ID	
Concentration	0.68 µg/µl
Conjugation	Unconjugated
Purification	Affinity Purified
Dilution Range	WB: 1:500 DB: 1:10, 000 ELISA: 1:10, 000 IP: 1:200
Formulation	
Isotype	IgG
Storage Instruction	Store at -20°C for long term storage. Avoid freeze-thaw cycles.

TARGET INFORMATION

Gene ID	7786
Gene Symbol	MAP3K12
Uniprot ID	M3K12_HUMAN
Immunogen	Synthetic peptide taken within amino acid region 270-320 on MAP3K12 protein. Phosphorylated S298 & S302 residues.
Immunogen Region	270-320
Specificity	
Immunogen Sequence	



Western blot with Anti-Phospho-MAP3K12 Antibody (STJ502552) with PMAP3K12 peptide. Antibody at 1:500 dilution in buffer.

This product is suitable for in-vitro studies under the RESEARCH USE ONLY [RUO] licence. This product must not be used as for diagnostic or other medical purposes.
St John's Laboratory Ltd, Knowledge Dock Business Centre, University Way, London, E16 2RD | Tel: 0208 223 3081