

Anti-Phospho-Phospholipase A2 antibody (450-500) (STJ502541)

STJ502541

GENERAL INFORMATION

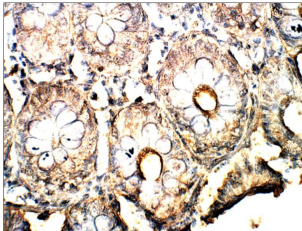
Product Type	Primary antibodies
Short Description	Rabbit polyclonal antibody anti-Phospho-Phospholipase A2 (450-500) is suitable for use in ELISA, Immunohistochemistry, Immunoprecipitation and Western Blot research applications.
Applications	ELISA, IHC, IP, WB
Host/Source	Rabbit
Reactivity	Bovine, Human, Monkey

PRODUCT PROPERTIES

Clonality	Polyclonal
Clone ID	
Concentration	0.55-0.75 µg/µl
Conjugation	Unconjugated
Purification	Affinity Purified
Dilution Range	WB: 1:500 DB: 1:10, 000 ELISA: 1:10, 000 IP: 1:150 IHC: 1:50-1:100
Formulation	
Isotype	IgG
Storage	Store at -20°C for long term storage. Avoid freeze-thaw cycles.
Instruction	

TARGET INFORMATION

Gene ID	9373
Gene Symbol	PLAA
Uniprot ID	PLAP_HUMAN
Immunogen	Synthetic peptide taken within amino acid region 450-500 on human Phospholipase A2-activating protein.
Immunogen Region	450-500
Specificity	
Immunogen Sequence	



Immunohistochemistry of baboon Large Intestine with Anti-Phospholipase A2 primary antibody (STJ502541) at 1:50 dilution in Buffer. Section was treated with DAB and Haematoxylin stain. Magnification is at 40X.