

Anti-PRKCE antibody (350-400) (STJ502516)

STJ502516

GENERAL INFORMATION

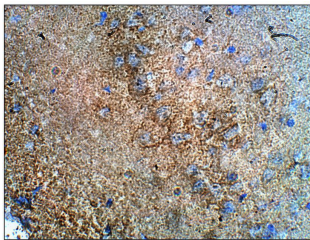
Product Type	Primary antibodies
Short Description	Rabbit polyclonal antibody anti-PRKCE (350-400) is suitable for use in ELISA, Immunoprecipitation and Western Blot research applications.
Applications	ELISA, IP, WB
Host/Source	Rabbit
Reactivity	Human, Monkey, Mouse, Rat

PRODUCT PROPERTIES

Clonality	Polyclonal
Clone ID	
Concentration	0.55-0.75 µg/µl
Conjugation	Unconjugated
Purification	Affinity Purified
Dilution Range	WB: 1:500 DB: 1:10, 000 ELISA: 1:10, 000 IP: 1:150 IHC: 1:50-1:150
Formulation	
Isotype	IgG
Storage Instruction	Store at -20°C for long term storage. Avoid freeze-thaw cycles.

TARGET INFORMATION

Gene ID	5581
Gene Symbol	PRKCE
Uniprot ID	KPCE_HUMAN
Immunogen	Synthetic peptide taken within amino acid region 350-400 on human Protein Kinase C epsilon type protein.
Immunogen Region	350-400
Specificity	
Immunogen Sequence	



Immunohistochemistry of mouse brain with Anti-PRKCE primary antibody (STJ502516) at 1:100 dilution in Buffer. Section was treated with DAB and Haematoxylin stain. Magnification is at 40X.