

Anti-Phospho-JAK1 antibody (1000-1050) (STJ502507)

STJ502507

GENERAL INFORMATION

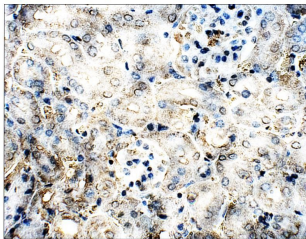
Product Type	Primary antibodies
Short Description	Rabbit polyclonal antibody anti-Phospho-JAK1 (1000-1050) is suitable for use in ELISA, Immunohistochemistry, Immunoprecipitation and Western Blot research applications.
Applications	ELISA, IHC, IP, WB
Host/Source	Rabbit
Reactivity	Human, Mouse, Rat

PRODUCT PROPERTIES

Clonality	Polyclonal
Clone ID	
Concentration	0.5 µg/µl
Conjugation	Unconjugated
Purification	Affinity Purified
Dilution Range	WB: 1:500 ELISA: 1:10, 000 IP: 1:150 IHC: 1:50-1:100
Formulation	
Isotype	IgG
Storage Instruction	Store at -20°C for long term storage. Avoid freeze-thaw cycles.

TARGET INFORMATION

Gene ID	3716
Gene Symbol	JAK1
Uniprot ID	JAK1_HUMAN
Immunogen	Synthetic peptide taken within amino acid region 1000-1050 on human JAK1 protein. Phosphorylated 1034 & 1035 tyrosine residues.
Immunogen Region	1000-1050
Specificity	
Immunogen Sequence	



Immunohistochemistry of mouse kidney with Anti-Phospho-JAK1 primary antibody (STJ502507) at 1:50 dilution in buffer. Section was treated with DAB and Haematoxylin stain. Magnification is at 40X.

This product is suitable for in-vitro studies under the RESEARCH USE ONLY [RUO] licence. This product must not be used as for diagnostic or other medical purposes.
St John's Laboratory Ltd, Knowledge Dock Business Centre, University Way, London, E16 2RD | Tel: 0208 223 3081