

Anti-Pin1 antibody (118-168) (STJ502496)

STJ502496

GENERAL INFORMATION

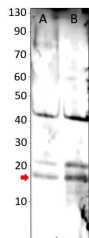
Product Type	Primary antibodies
Short Description	Rabbit polyclonal antibody anti-Pin1 (118-168) is suitable for use in ELISA, Immunoprecipitation and Western Blot research applications.
Applications	ELISA, IP, WB
Host/Source	Rabbit
Reactivity	Human, Monkey, Mouse, Rat

PRODUCT PROPERTIES

Clonality	Polyclonal
Clone ID	
Concentration	0.56-0.62 µg/µl
Conjugation	Unconjugated
Purification	Affinity Purified
Dilution Range	WB: 1:500 DB: 1:10,000 ELISA: 1:10,000 IP: 1:200
Formulation	
Isotype	IgG
Storage Instruction	Store at -20°C for long term storage. Avoid freeze-thaw cycles.

TARGET INFORMATION

Gene ID	
Gene Symbol	
Uniprot ID	
Immunogen	Synthetic peptide taken within amino acid region 118-168 on human peptidyl-prolyl cis-trans isomerase NIMA-interacting 1 protein.
Immunogen Region	118-168
Specificity	
Immunogen Sequence	



Western blot with Anti-Pin1 Antibody (STJ502496) on A) Rat brain, B) Mouse cerebellum. Antibody at 1:500 dilution in buffer.

This product is suitable for in-vitro studies under the RESEARCH USE ONLY [RUO] licence. This product must not be used as for diagnostic or other medical purposes.
St John's Laboratory Ltd, Knowledge Dock Business Centre, University Way, London, E16 2RD | Tel: 0208 223 3081