

Anti-PGCG antibody (C-Term) (STJ502471)

STJ502471

GENERAL INFORMATION

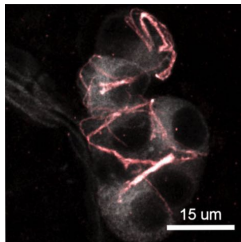
| | |
|--------------------------|--|
| Product Type | Primary antibodies |
| Short Description | Rabbit polyclonal antibody anti-PGCG (C-Term) is suitable for use in Confocal Microscopy, ELISA, Immunocytochemistry, Immunofluorescence, Immunohistochemistry and Western Blot research applications. |
| Applications | CM, ELISA, ICC, IF, IHC, WB |
| Host/Source | Rabbit |
| Reactivity | Human, Mouse, Rat |

PRODUCT PROPERTIES

| | |
|----------------------------|--|
| Clonality | Polyclonal |
| Clone ID | |
| Concentration | 0.75-1.20 µg/µl |
| Conjugation | Unconjugated |
| Purification | Affinity Purified |
| Dilution | WB: 1:500 |
| Range | DB: 1:10, 000 ELISA: 1:10, 000 IHC: 1:200 ICC: 1:200 IF: 1:200 CFM: 1:200 |
| Formulation | |
| Isotype | IgG |
| Storage Instruction | Store at -20°C for long term storage. Avoid freeze-thaw cycles. |

TARGET INFORMATION

| | |
|---------------------------|--|
| Gene ID | NA |
| Gene Symbol | Gucy2g |
| Uniprot ID | GUC2G_RAT |
| Immunogen | Synthetic C-terminal peptide corresponding to unique amino acid sequences on Particulate Guanylyl Cyclase G protein. |
| Immunogen Region | C-Term |
| Specificity | |
| Immunogen Sequence | |



Immunofluorescence of mouse nose tissue with Anti-PGCG primary antibody (STJ502471) at NA dilution in buffer. White/grey: Grunberg ganglion neurons. Red: Antibody immunoreactivity. The antibody labels ciliated subcellular structures on the neurons.