

Anti-PGCF antibody (C-Term) (STJ502468)

STJ502468

GENERAL INFORMATION

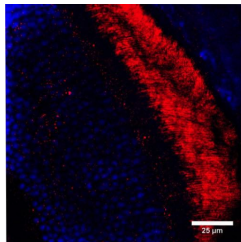
Product Type	Primary antibodies
Short Description	Rabbit polyclonal antibody anti-PGCF (C-Term) is suitable for use in Confocal Microscopy, ELISA, Immunocytochemistry, Immunofluorescence, Immunohistochemistry and Western Blot research applications.
Applications	CM, ELISA, ICC, IF, IHC, WB
Host/Source	Rabbit
Reactivity	Human, Mouse, Rat

PRODUCT PROPERTIES

Clonality	Polyclonal
Clone ID	
Concentration	0.75-1.20 µg/µl
Conjugation	Unconjugated
Purification	Affinity Purified
Dilution	WB: 1:500
Range	DB: 1:10, 000 ELISA: 1:10, 000 IHC: 1:200 ICC: 1:200 IF: 1:200 CFM: 1:200
Formulation	
Isotype	IgG
Storage Instruction	Store at -20°C for long term storage. Avoid freeze-thaw cycles.

TARGET INFORMATION

Gene ID	116556
Gene Symbol	Gucy2f
Uniprot ID	GUC2F_RAT
Immunogen	Synthetic C-terminal peptide corresponding to unique amino acid sequences on Particulate Guanylyl Cyclase F protein.
Immunogen Region	C-Term
Specificity	
Immunogen Sequence	



Immunofluorescence of mouse retina tissue with Anti-PGCF primary antibody (STJ502468). Red: Antibody immunoreactivity. Blue: Nuclei. Photoreceptor outer segments are labelled by the antibody.