

Anti-PGCD antibody (C-Term) (STJ502462)

STJ502462

GENERAL INFORMATION

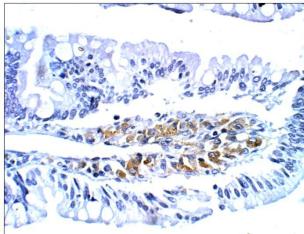
Product Type	Primary antibodies
Short Description	Rabbit polyclonal antibody anti-PGCD (C-Term) is suitable for use in Confocal Microscopy, ELISA, Immunocytochemistry, Immunofluorescence, Immunohistochemistry and Western Blot research applications.
Applications	CM, ELISA, ICC, IF, IHC, WB
Host/Source	Rabbit
Reactivity	Human, Mouse, Rat

PRODUCT PROPERTIES

Clonality	Polyclonal
Clone ID	
Concentration	0.75-1.20 µg/µl
Conjugation	Unconjugated
Purification	Affinity Purified
Dilution Range	WB: 1:500 DB: 1:10, 000 ELISA: 1:10, 000 IP: 1:200 IHC: 1:200 ICC: 1:200 IF: 1:200 CFM: 1:200
Formulation	
Isotype	IgG
Storage	Store at -20°C for long term storage. Avoid freeze-thaw cycles.
Instruction	

TARGET INFORMATION

Gene ID	113911
Gene Symbol	Gucy2d
Uniprot ID	GUC2D_RAT
Immunogen	Synthetic C-terminal peptide corresponding to unique amino acid sequences on Particulate Guanylyl Cyclase D protein.
Immunogen Region	C-Term
Specificity	
Immunogen Sequence	



Immunohistochemistry of baboon small intestine with Anti-PGCD primary antibody (STJ502462) at 1:100 dilution in Buffer. Section was treated with DAB and Haematoxylin stain. Magnification is at 40X.