

Anti-Particulate Guanylate Cyclase C antibody (C-Term) (STJ502459)

STJ502459

GENERAL INFORMATION

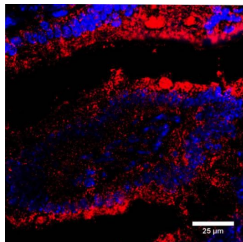
Product Type	Primary antibodies
Short Description	Rabbit polyclonal antibody anti-Particulate Guanylate Cyclase C (C-Term) is suitable for use in Confocal Microscopy, ELISA, Immunocytochemistry, Immunofluorescence, Immunohistochemistry, Immunoprecipitation and Western Blot research applications.
Applications	CM, ELISA, ICC, IF, IHC, IP, WB
Host/Source	Rabbit
Reactivity	Human, Mouse, Rat

PRODUCT PROPERTIES

Clonality	Polyclonal
Clone ID	
Concentration	0.75-1.20 µg/µl
Conjugation	Unconjugated
Purification	Affinity Purified
Dilution	WB: 1:500
Range	DB: 1:10, 000 ELISA: 1:10, 000 IHC: 1:200 ICC: 1:200 IF: 1:200 CFM: 1:200
Formulation	
Isotype	IgG
Storage Instruction	Store at -20°C for long term storage. Avoid freeze-thaw cycles.

TARGET INFORMATION

Gene ID	25711
Gene Symbol	Gucy2c
Uniprot ID	GUC2C_RAT
Immunogen	Synthetic C-terminal peptide corresponding to unique amino acid sequences on Particulate Guanylyl Cyclase C protein.
Immunogen Region	C-Term
Specificity	
Immunogen Sequence	



Immunofluorescence of mouse small intestine with Anti-Particulate Guanylate Cyclase C primary antibody (STJ502459). Red: Antibody immunoreactivity. Blue: Nuclei. Staining is found on the periphery of intestinal villi.

This product is suitable for in-vitro studies under the RESEARCH USE ONLY [RUO] licence. This product must not be used as for diagnostic or other medical purposes.
St John's Laboratory Ltd, Knowledge Dock Business Centre, University Way, London, E16 2RD | Tel: 0208 223 3081