

Anti-NPR1 antibody (1042-1057) (STJ502453)

STJ502453

GENERAL INFORMATION

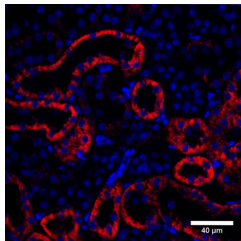
Product Type	Primary antibodies
Short Description	Rabbit polyclonal antibody anti-NPR1 (1042-1057) is suitable for use in Confocal Microscopy, ELISA, Immunocytochemistry, Immunofluorescence, Immunohistochemistry, Immunoprecipitation and Western Blot research applications.
Applications	CM, ELISA, ICC, IF, IHC, IP, WB
Host/Source	Rabbit
Reactivity	Human, Mouse, Rat

PRODUCT PROPERTIES

Clonality	Polyclonal
Clone ID	
Concentration	0.85 µg/µl
Conjugation	Unconjugated
Purification	Affinity Purified
Dilution Range	WB: 1:500 DB: 1:10, 000 ELISA: 1:10, 000 IP: 1:200 IHC: 1:25-1:250 ICC: 1:25-1:250 IF: 1:25-1:250 CFM: 1:25-1:250
Formulation	
Isotype	IgG
Storage	Store at -20°C for long term storage. Avoid freeze-thaw cycles.
Instruction	

TARGET INFORMATION

Gene ID	4881
Gene Symbol	NPR1
Uniprot ID	ANPRA_HUMAN
Immunogen	Synthetic peptide corresponding to C terminal amino acids 1042-1057 of Human PGCA. Sequence: VRTYWLLGERGCSTRG
Immunogen Region	1042-1057
Specificity	Will label a 127 to 130 kDa protein in various tissues. Will label only PGCA, but not other Particulate Guanylate Cyclases.
Immunogen Sequence	



Immunofluorescence of mouse kidney with Anti-NPR1 primary antibody (STJ502453). Red: Antibody immunoreactivity. Blue: Nuclei.