

Anti-EIF2AK3 antibody (1000-1050) (STJ502418)

STJ502418

GENERAL INFORMATION

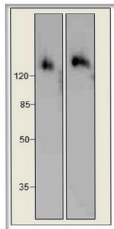
Product Type	Primary antibodies
Short Description	Chicken polyclonal antibody anti-EIF2AK3 (1000-1050) is suitable for use in Dot Blot, ELISA, Immunohistochemistry, Immunoprecipitation and Western Blot research applications.
Applications	DB, ELISA, IHC, IP, WB
Host/Source	Chicken
Reactivity	Human, Mouse, Rat

PRODUCT PROPERTIES

Clonality	Polyclonal
Clone ID	
Concentration	0.68-0.70 µg/µl
Conjugation	Unconjugated
Purification	Affinity Purified
Dilution Range	WB: 1:500 DB: 1:4, 000 ELISA: 1:4, 000 IP: 1:150 IHC: 1:50-1:100
Formulation	
Isotype	IgY
Storage	Store at -20°C for long term storage. Avoid freeze-thaw cycles.
Instruction	

TARGET INFORMATION

Gene ID	9451
Gene Symbol	EIF2AK3
Uniprot ID	E2AK3_HUMAN
Immunogen	Synthetic peptide taken within amino acid region 1000-1050 on human Eukaryotic translation initiation factor 2-alpha kinase 3 protein.
Immunogen Region	1000-1050
Specificity	
Immunogen Sequence	



Western blot with Anti-EIF2AK3 Antibody (STJ502418) on rat adrenal cells. Left) Chicken serum antibodies, Right) Total PERK IgY.