

Anti-PDPN antibody (30-100) (STJ502405)

STJ502405

GENERAL INFORMATION

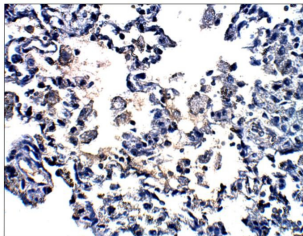
Product Type	Primary antibodies
Short Description	Rabbit polyclonal antibody anti-PDPN (30-100) is suitable for use in ELISA, Immunohistochemistry, Immunoprecipitation and Western Blot research applications.
Applications	ELISA, IHC, IP, WB
Host/Source	Rabbit
Reactivity	Human, Monkey, Mouse

PRODUCT PROPERTIES

Clonality	Polyclonal
Clone ID	
Concentration	0.55-0.75 µg/µl
Conjugation	Unconjugated
Purification	Affinity Purified
Dilution Range	WB: 1:500 DB: 1:10, 000 ELISA: 1:10, 000 IP: 1:200 IHC: 1:100
Formulation	
Isotype	IgG
Storage	Store at -20°C for long term storage. Avoid freeze-thaw cycles.
Instruction	

TARGET INFORMATION

Gene ID	10630
Gene Symbol	PDPN
Uniprot ID	PDPN_HUMAN
Immunogen	Synthetic peptide taken within amino acid region 30-100 on human Podoplanin protein.
Immunogen Region	30-100
Specificity	
Immunogen Sequence	



Immunohistochemistry of baboon lung with Anti-PDPN primary antibody (STJ502405) at 1:100 dilution in buffer. Section was treated with DAB and Haematoxylin stain. Magnification is at 40x.