

Anti-PDE8A antibody (Mid-Region) (STJ502378)

STJ502378

GENERAL INFORMATION

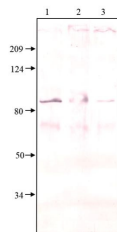
Product Type	Primary antibodies
Short Description	Rabbit polyclonal antibody anti-PDE8A (Mid-Region) is suitable for use in Confocal Microscopy, ELISA, Immunocytochemistry, Immunofluorescence, Immunohistochemistry, Immunoprecipitation and Western Blot research applications.
Applications	CM, ELISA, ICC, IF, IHC, IP, WB
Host/Source	Rabbit
Reactivity	Human, Monkey, Mouse, Rat

PRODUCT PROPERTIES

Clonality	Polyclonal
Clone ID	
Concentration	0.59 µg/µl
Conjugation	Unconjugated
Purification	Affinity Purified
Dilution Range	WB: 1:500-1:2,000 DB: 1:10,000 ELISA: 1:10,000 IP: 1:250 IHC: 1:250 ICC: 1:250 IF: 1:250 CFM: 1:250
Formulation	
Isotype	IgG
Storage	Store at -20°C for long term storage. Avoid freeze-thaw cycles.
Instruction	

TARGET INFORMATION

Gene ID	
Gene Symbol	
Uniprot ID	
Immunogen	Synthetic cyclic peptide from mid-region common to all PDE8A variants.
Immunogen Region	Mid-Region
Specificity	This antibody will label only PDE8A variants. This antibody will not cross react with other PDE family members.
Immunogen Sequence	



Western blot with Anti-PDE8A Antibody (STJ502378) on
1) SDS-solubilised PDE8 cell cytosol, 2) SDS-solubilised treated-PDE8 cell cytosol, 3) SDS-solubilised PDE8 cell membrane.

This product is suitable for in-vitro studies under the RESEARCH USE ONLY [RUO] licence. This product must not be used as for diagnostic or other medical purposes.
St John's Laboratory Ltd, Knowledge Dock Business Centre, University Way, London, E16 2RD | Tel: 0208 223 3081