

Anti-PDE7A antibody (STJ502366)

STJ502366

GENERAL INFORMATION

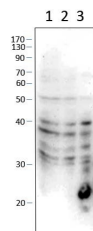
Product Type	Primary antibodies
Short Description	Goat polyclonal antibody anti-PDE7A is suitable for use in ELISA, Immunoprecipitation and Western Blot research applications.
Applications	ELISA, IP, WB
Host/Source	Goat
Reactivity	Human, Mouse, Rat

PRODUCT PROPERTIES

Clonality	Polyclonal
Clone ID	
Concentration	0.50-0.75 µg/µl
Conjugation	Unconjugated
Purification	Affinity Purified
Dilution Range	WB: 1:500 DB: 1:10, 000 ELISA: 1:10, 000 IP: 1:250
Formulation	
Isotype	IgG
Storage Instruction	Store at -20°C for long term storage. Avoid freeze-thaw cycles.

TARGET INFORMATION

Gene ID	18583
Gene Symbol	Pde7a
Uniprot ID	PDE7A_MOUSE
Immunogen	Synthetic cyclic peptide common to all PDE7A variants
Immunogen Region	
Specificity	This antibody is specific for PDE7A variants and will not cross-react with PDE7B or other PDE family members.
Immunogen Sequence	



Western blot with Anti-PDE7A Antibody (STJ502366) on
1) SKNBE-2 cells, 2) MCF7 cells, 3) Hu cells.

This product is suitable for in-vitro studies under the RESEARCH USE ONLY [RUO] licence. This product must not be used as for diagnostic or other medical purposes.
St John's Laboratory Ltd, Knowledge Dock Business Centre, University Way, London, E16 2RD | Tel: 0208 223 3081