

Anti-PDE6B antibody (STJ502356)

STJ502356

GENERAL INFORMATION

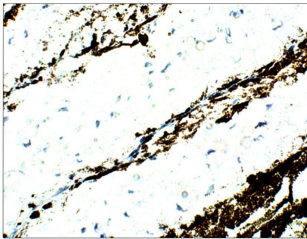
Product Type	Primary antibodies
Short Description	Rabbit polyclonal antibody anti-PDE6B is suitable for use in ELISA, Confocal Microscopy, Immunocytochemistry, Immunofluorescence, Immunohistochemistry and Western Blot research applications.
Applications	ELISA, CM, ICC, IF, IHC, WB
Host/Source	Rabbit
Reactivity	Bovine, Human, Mouse, Pig, Rat

PRODUCT PROPERTIES

Clonality	Polyclonal
Clone ID	
Concentration	0.5 µg/µl
Conjugation	Unconjugated
Purification	Affinity Purified
Dilution Range	WB: 1:500 DB: 1:10, 000 ELISA: 1:10, 000 IP: 1:200 IHC: 1:200 ICC: 1:200 IF: 1:200 CFM: 1:200
Formulation	
Isotype	IgG
Storage	Store at -20°C for long term storage. Avoid freeze-thaw cycles.
Instruction	

TARGET INFORMATION

Gene ID	5158
Gene Symbol	PDE6B
Uniprot ID	PDE6B_HUMAN
Immunogen	Synthetic cyclic peptide common to all PDE6 Beta variants
Immunogen Region	
Specificity	
Immunogen Sequence	



Immunohistochemistry of rat tissue with Anti-PDE6B primary antibody (STJ502356) at 1:50 dilution in Buffer. Section was treated with DAB and Haematoxylin stain. Magnification is at 40X.