

## Anti-PDE5A antibody (120-170) (STJ502349)

STJ502349

### GENERAL INFORMATION

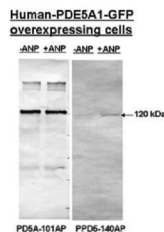
<b>Product Type</b>	Primary antibodies
<b>Short Description</b>	Rabbit polyclonal antibody anti-PDE5A (120-170) is suitable for use in Confocal Microscopy, ELISA, Immunocytochemistry, Immunofluorescence, Immunohistochemistry, Immunoprecipitation and Western Blot research applications.
<b>Applications</b>	CM, ELISA, ICC, IF, IHC, IP, WB
<b>Host/Source</b>	Rabbit
<b>Reactivity</b>	Chicken, Human, Mouse, Rat

### PRODUCT PROPERTIES

<b>Clonality</b>	Polyclonal
<b>Clone ID</b>	
<b>Concentration</b>	0.55-0.60 µg/µl
<b>Conjugation</b>	Unconjugated
<b>Purification</b>	Affinity Purified
<b>Dilution Range</b>	WB: 1:500-1:1,000 DB: 1:10,000 ELISA: 1:10,000 IP: 1:250 IHC: 1:250 ICC: 1:250 IF: 1:250 CFM: 1:250
<b>Formulation</b>	
<b>Isotype</b>	IgG
<b>Storage Instruction</b>	Store at -20°C for long term storage. Avoid freeze-thaw cycles.

### TARGET INFORMATION

<b>Gene ID</b>	8654
<b>Gene Symbol</b>	PDE5A
<b>Uniprot ID</b>	PDE5A_HUMAN
<b>Immunogen</b>	Synthetic peptide common to all PDE5A variants taken within amino acid region 120-170 on human PDE5A protein.
<b>Immunogen Region</b>	120-170
<b>Specificity</b>	This antibody detects 99 and 89 kDa PDE5A proteins in various tissues. This antibody does not cross-react with other PDE family members.
<b>Immunogen Sequence</b>	



Left) Western blot with Anti-PDE5A Antibody (STJ502349) at 1:500 dilution in buffer. Overexpressing cells were treated with or without ANP. 1:500 in antibody dilution in buffer. Blot was stripped and re-probed with STJ502621.