

Anti-PDE4D7 antibody (STJ502340)

STJ502340

GENERAL INFORMATION

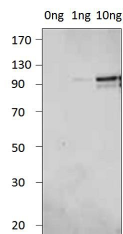
Product Type	Primary antibodies
Short Description	Rabbit polyclonal antibody anti-PDE4D7 is suitable for use in ELISA, Immunoprecipitation and Western Blot research applications.
Applications	ELISA, IP, WB
Host/Source	Rabbit
Reactivity	Chicken, Mouse, Rat

PRODUCT PROPERTIES

Clonality	Polyclonal
Clone ID	
Concentration	0.2 µg/µl
Conjugation	Unconjugated
Purification	Affinity Purified
Dilution	WB: 1:500
Range	DB: 1:10, 000 ELISA: 1:10, 000 IP: 1:150
Formulation	
Isotype	IgG
Storage	Store at -20°C for long term storage. Avoid freeze-thaw cycles.
Instruction	

TARGET INFORMATION

Gene ID	238871
Gene Symbol	Pde4d
Uniprot ID	PDE4D_MOUSE
Immunogen	Synthetic peptide corresponding to unique amino acid sequence on PDE4D7 variant.
Immunogen Region	
Specificity	This antibody does not cross react with other PDE4D variants including PDE4D1, PDE4D2, PDE4D3, PDE4D4, PDE4D5. It also does not cross react with other PDE family members including PDE4A, PDE4B or PDE4C.
Immunogen Sequence	



Western blot with Anti-PDE4D7 Antibody (STJ502340) on PD4D7 peptide. Antibody at 1:500 dilution in buffer.

This product is suitable for in-vitro studies under the RESEARCH USE ONLY [RUO] licence. This product must not be used as for diagnostic or other medical purposes.
St John's Laboratory Ltd, Knowledge Dock Business Centre, University Way, London, E16 2RD | Tel: 0208 223 3081