

Anti-PDE4D antibody (STJ502331)

STJ502331

GENERAL INFORMATION

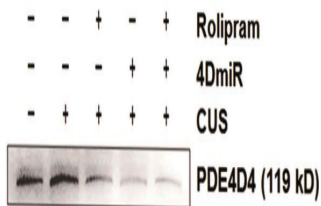
Product Type	Primary antibodies
Short Description	Rabbit polyclonal antibody anti-PDE4D is suitable for use in ELISA, Immunoprecipitation and Western Blot research applications.
Applications	ELISA, IP, WB
Host/Source	Rabbit
Reactivity	Mouse, Rat

PRODUCT PROPERTIES

Clonality	Polyclonal
Clone ID	
Concentration	0.52-0.62 µg/µl
Conjugation	Unconjugated
Purification	Affinity Purified
Dilution Range	WB: 1:500 DB: 1:10, 000 ELISA: 1:10, 000 IP: 1:150
Formulation	
Isotype	IgG
Storage Instruction	Store at -20°C for long term storage. Avoid freeze-thaw cycles.

TARGET INFORMATION

Gene ID	5144
Gene Symbol	PDE4D
Uniprot ID	PDE4D_HUMAN
Immunogen	Synthetic peptide corresponding to unique amino acid sequence on PDE4D4 variant gene.
Immunogen Region	
Specificity	
Immunogen Sequence	



Western blot of long-form PDE4D variants in mouse prefrontal cortical tissues using Anti-PDE4D Antibody (STJ502331).

This product is suitable for in-vitro studies under the RESEARCH USE ONLY [RUO] licence. This product must not be used as for diagnostic or other medical purposes.
St John's Laboratory Ltd, Knowledge Dock Business Centre, University Way, London, E16 2RD | Tel: 0208 223 3081