

## Anti-ENSG00000285188 antibody (C-Term) (STJ502317)

STJ502317

### GENERAL INFORMATION

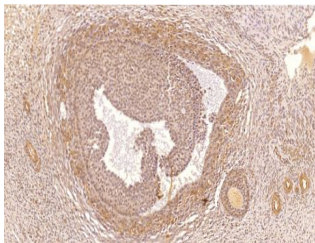
<b>Product Type</b>	Primary antibodies
<b>Short Description</b>	Rabbit polyclonal antibody anti-ENSG00000285188 (C-Term) is suitable for use in Confocal Microscopy, ELISA, Immunocytochemistry, Immunofluorescence, Immunohistochemistry, Immunoprecipitation and Western Blot research applications.
<b>Applications</b>	CM, ELISA, ICC, IF, IHC, IP, WB
<b>Host/Source</b>	Rabbit
<b>Reactivity</b>	Human, Mouse, Rat

### PRODUCT PROPERTIES

<b>Clonality</b>	Polyclonal
<b>Clone ID</b>	
<b>Concentration</b>	0.65 µg/µl
<b>Conjugation</b>	Unconjugated
<b>Purification</b>	Affinity Purified
<b>Dilution Range</b>	WB: 1:500-1:2, 500 DB: 1:10, 000 ELISA: 1:10, 000 IP: 1:200 IHC: 1:200 ICC: 1:200 IF: 1:200 CFM: 1:200
<b>Formulation</b>	
<b>Isotype</b>	IgG
<b>Storage</b>	Store at -20°C for long term storage. Avoid freeze-thaw cycles.
<b>Instruction</b>	

### TARGET INFORMATION

<b>Gene ID</b>	5143
<b>Gene Symbol</b>	PDE4C
<b>Uniprot ID</b>	PDE4C_HUMAN
<b>Immunogen</b>	Synthetic cyclic carboxy-terminal peptide common to all PDE4C variants.
<b>Immunogen Region</b>	C-Term
<b>Specificity</b>	This antibody detects 3 isoforms of PDE4C subclasses: PDE4C1, PDE4C2, and PDE4C3.
<b>Immunogen Sequence</b>	



Immunohistochemistry of human ovarian medulla with Anti-ENSG00000285188 primary antibody (STJ502317) at 1: dilution in buffer.

This product is suitable for in-vitro studies under the RESEARCH USE ONLY [RUO] licence. This product must not be used as for diagnostic or other medical purposes.  
St John's Laboratory Ltd, Knowledge Dock Business Centre, University Way, London, E16 2RD | Tel: 0208 223 3081