

## Anti-PDE4B4 antibody (STJ502314)

STJ502314

### GENERAL INFORMATION

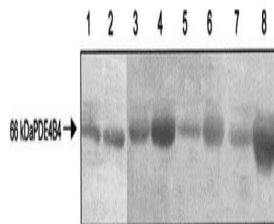
<b>Product Type</b>	Primary antibodies
<b>Short Description</b>	Rabbit polyclonal antibody anti-PDE4B4 is suitable for use in ELISA, Immunoprecipitation and Western Blot research applications.
<b>Applications</b>	ELISA, IP, WB
<b>Host/Source</b>	Rabbit
<b>Reactivity</b>	Human, Mouse, Rat

### PRODUCT PROPERTIES

<b>Clonality</b>	Polyclonal
<b>Clone ID</b>	
<b>Concentration</b>	0.5 µg/µl
<b>Conjugation</b>	Unconjugated
<b>Purification</b>	Affinity Purified
<b>Dilution Range</b>	WB: 1:250-1:500 DB: 1:10, 000 ELISA: 1:10, 000 IP: 1:200
<b>Formulation</b>	
<b>Isotype</b>	IgG
<b>Storage Instruction</b>	Store at -20°C for long term storage. Avoid freeze-thaw cycles.

### TARGET INFORMATION

<b>Gene ID</b>	24626
<b>Gene Symbol</b>	Pde4b
<b>Uniprot ID</b>	PDE4B_RAT
<b>Immunogen</b>	Synthetic peptide selective only for PDE4B4 protein.
<b>Immunogen Region</b>	
<b>Specificity</b>	
<b>Immunogen Sequence</b>	



Western blot with Anti-PDE4B4 Antibody (STJ502314). Lanes 1 and 2 are left and right testes from control rat. Lanes 3, 5, and 7 are the left contralateral control scrotal testis, lanes 4, 6, and 8 are the right abdominal testis from 10-, 20-, and 30 day cryptorchid rats, respectively.