

## Anti-PDE4A antibody (N-Term) (STJ502293)

STJ502293

### GENERAL INFORMATION

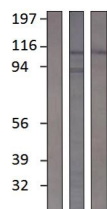
|                          |  |
|--------------------------|--|
| <b>Product Type</b>      | Primary antibodies   |
| <b>Short Description</b> | Rabbit polyclonal antibody anti-PDE4A (N-Term) is suitable for use in Confocal Microscopy, ELISA, Immunocytochemistry, Immunofluorescence, Immunohistochemistry, Immunoprecipitation and Western Blot research applications. |
| <b>Applications</b>      | CM, ELISA, ICC, IF, IHC, IP, WB  |
| <b>Host/Source</b>       | Rabbit   |
| <b>Reactivity</b>        | Human, Mouse, Rat  |

### PRODUCT PROPERTIES

|                       |   |
|-----------------------|---|
| <b>Clonality</b>      | Polyclonal  |
| <b>Clone ID</b>       |   |
| <b>Concentration</b>  | 0.70-1.0 µg/µl  |
| <b>Conjugation</b>    | Unconjugated  |
| <b>Purification</b>   | Affinity Purified   |
| <b>Dilution Range</b> | WB: 1:750-1:1, 000<br>DB: 1:10, 000<br>ELISA: 1:10, 000<br>IP: 1:250<br>IHC: 1:250<br>ICC: 1:250<br>IF: 1:250<br>CFM: 1:250 |
| <b>Formulation</b>    |   |
| <b>Isotype</b>        | IgG   |
| <b>Storage</b>        | Store at -20°C for long term storage. Avoid freeze-thaw cycles.   |
| <b>Instruction</b>    |   |

### TARGET INFORMATION

|                           |   |
|---------------------------|---|
| <b>Gene ID</b>            | 5141  |
| <b>Gene Symbol</b>        | PDE4A   |
| <b>Uniprot ID</b>         | PDE4A_HUMAN   |
| <b>Immunogen</b>          | Synthetic cyclic peptide specific only for PDE4A5 protein. N-terminal sequence modified to achieve desired antigenicity and linker for covalent coupling to blue carrier protein. |
| <b>Immunogen Region</b>   | N-Term  |
| <b>Specificity</b>        | PDE4A5 variant specific. Does not cross-react with other PDE4A proteins including: PDE4A1, PDE4A4 PDE4A8 and PDE4Ax. Does not cross-react with other PDE family members.          |
| <b>Immunogen Sequence</b> |   |



Western blot with Anti-PDE4A Antibody (STJ502293). (A/B) Preimmune (C) STJ502293, (A) with PD4A1 peptide, (B/C) with PD4A5 peptide. Antibody at 1:500 dilution in buffer.