

Anti-PDE4A antibody (C-Term) (STJ502279)

STJ502279

GENERAL INFORMATION

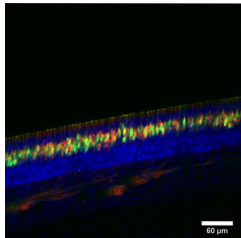
Product Type	Primary antibodies
Short Description	Rabbit polyclonal antibody anti-PDE4A (C-Term) is suitable for use in Confocal Microscopy, ELISA, Immunocytochemistry, Immunofluorescence, Immunohistochemistry, Immunoprecipitation and Western Blot research applications.
Applications	CM, ELISA, ICC, IF, IHC, IP, WB
Host/Source	Rabbit
Reactivity	Human, Moose, Mouse, Rat

PRODUCT PROPERTIES

Clonality	Polyclonal
Clone ID	
Concentration	0.5 µg/µl
Conjugation	Unconjugated
Purification	Affinity Purified
Dilution Range	WB: 1:1, 000-1:2, 500 DB: 1:10, 000 ELISA: 1:10, 000 IP: 1:250 IHC: 1:100-1:400 ICC: 1:100-1:400 IF: 1:100-1:400 CFM: 1:100-1:400
Formulation	
Isotype	IgG
Storage	Store at -20°C for long term storage. Avoid freeze-thaw cycles.
Instruction	

TARGET INFORMATION

Gene ID	5141
Gene Symbol	PDE4A
Uniprot ID	PDE4A_HUMAN
Immunogen	Synthetic cyclic peptide corresponding to the C-terminal region of PDE4A. Common to all PDE4A proteins.
Immunogen Region	C-Term
Specificity	This antibody labels all known PDE4A variants including PDE4A1 (66 kDa) , PDE4A5 (109 kDa) , PDE4A8 (106 kDa) , AND PDE4Ax (10 kDa) and a 76 kDa testis specific A variant.
Immunogen Sequence	



Immunofluorescence of mouse tissue with Anti-PDE4A primary antibody (STJ502279). Green: Olfactory sensory neurons. Red: Antibody immunoreactivity. Blue: Nuclei. PDE4A antibody labels the olfactory sensory neurons in mouse nasal epithelia.

This product is suitable for in-vitro studies under the RESEARCH USE ONLY [RUO] licence. This product must not be used as for diagnostic or other medical purposes.
St John's Laboratory Ltd, Knowledge Dock Business Centre, University Way, London, E16 2RD | Tel: 0208 223 3081