

Anti-PDE4B antibody (STJ502276)

STJ502276

GENERAL INFORMATION

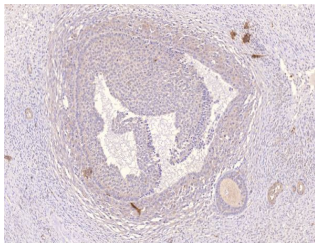
Product Type	Primary antibodies
Short Description	Rabbit polyclonal antibody anti-PDE4B is suitable for use in Confocal Microscopy, ELISA, Immunocytochemistry, Immunofluorescence, Immunohistochemistry, Immunoprecipitation and Western Blot research applications.
Applications	CM, ELISA, ICC, IF, IHC, IP, WB
Host/Source	Rabbit
Reactivity	Human, Mouse, Rat

PRODUCT PROPERTIES

Clonality	Polyclonal
Clone ID	
Concentration	0.57 µg/µl
Conjugation	Unconjugated
Purification	Affinity Purified
Dilution Range	WB: 1:500 DB: 1:10, 000 ELISA: 1:10, 000 IP: 1:150
Formulation	
Isotype	IgG
Storage Instruction	Store at -20°C for long term storage. Avoid freeze-thaw cycles.

TARGET INFORMATION

Gene ID	5142
Gene Symbol	PDE4B
Uniprot ID	PDE4B_HUMAN
Immunogen Region	C-terminal cyclic peptide unique to all PDED subtypes variants.
Specificity	This antibody labels all PDE4D proteins including PDE4D1, PDE4D2, PDE4D3, PDE4D4, and PDE4D5 variants. Does not cross react with PDE4A, PDE4B, PDE4D6, PDE4D7, PDE4D8, PDE4D9, OR PDE4C.
Immunogen Sequence	



Immunohistochemistry of human ovarian medulla with Anti-PDE4B primary antibody (STJ502276) at 1:50 dilution in buffer.

This product is suitable for in-vitro studies under the RESEARCH USE ONLY [RUO] licence. This product must not be used as for diagnostic or other medical purposes.
St John's Laboratory Ltd, Knowledge Dock Business Centre, University Way, London, E16 2RD | Tel: 0208 223 3081