

Anti-PDE3A antibody (STJ502262)

STJ502262

GENERAL INFORMATION

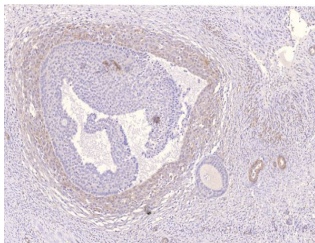
Product Type	Primary antibodies
Short Description	Rabbit polyclonal antibody anti-PDE3A is suitable for use in ELISA, FRET, Immunocytochemistry, Immunofluorescence, Immunohistochemistry, Immunoprecipitation and Western Blot research applications.
Applications	ELISA, FRET, ICC, IF, IHC, IP, WB
Host/Source	Rabbit
Reactivity	Human, Monkey, Mouse, Rat, Xenopus

PRODUCT PROPERTIES

Clonality	Polyclonal
Clone ID	
Concentration	0.719 µg/µl
Conjugation	Unconjugated
Purification	Affinity Purified
Dilution Range	WB: 1:500 DB: 1:10, 000 ELISA: 1:10, 000 IP: 1:200 IHC: 1:250 ICC: 1:250 IF: 1:250 CFM: 1:250
Formulation	
Isotype	IgG
Storage	Store at -20°C for long term storage. Avoid freeze-thaw cycles.
Instruction	

TARGET INFORMATION

Gene ID	5139
Gene Symbol	PDE3A
Uniprot ID	PDE3A_HUMAN
Immunogen	Synthetic peptide selective only for PDE3A variants.
Immunogen Region	
Specificity	
Immunogen Sequence	



Immunohistochemistry of human ovarian medulla with Anti-PDE3A primary antibody (STJ502262) at 1:100 dilution in buffer.