

Anti-PDE2A antibody (1-50) (STJ502256)

STJ502256

GENERAL INFORMATION

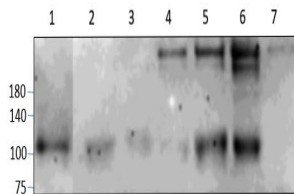
Product Type	Primary antibodies
Short Description	Rabbit polyclonal antibody anti-PDE2A (1-50) is suitable for use in ELISA, Immunohistochemistry, Immunoprecipitation and Western Blot research applications.
Applications	ELISA, IHC, IP, WB
Host/Source	Rabbit
Reactivity	Human, Mouse, Rat

PRODUCT PROPERTIES

Clonality	Polyclonal
Clone ID	
Concentration	0.5 µg/µl
Conjugation	Unconjugated
Purification	Affinity Purified
Dilution Range	WB: 1:500 ELISA: 1:10, 000 IP: 1:200 IHC: 1:100
Formulation	
Isotype	IgG
Storage Instruction	Store at -20°C for long term storage. Avoid freeze-thaw cycles.

TARGET INFORMATION

Gene ID	5138
Gene Symbol	PDE2A
Uniprot ID	PDE2A_HUMAN
Immunogen	Synthetic peptide corresponding to region within amino acids 1-50 on N-terminus of human PDE2A3 protein.
Immunogen Region	1-50
Specificity	This antibody will detect PDE2A3 only.
Immunogen Sequence	



Western blot with Anti-PDE2A Antibody (STJ502256) on rat 1) Heart, 2) Testis, 3) Ovary, 4) Midbrain, 5) Cerebellum, 6) Spinal cord. Antibody at 1:250 dilution in buffer.