

## Anti-PDE2A antibody (1-50) (STJ502253)

STJ502253

### GENERAL INFORMATION

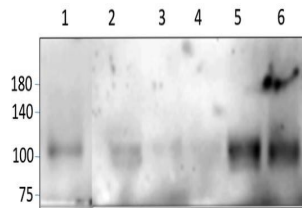
<b>Product Type</b>	Primary antibodies
<b>Short Description</b>	Rabbit polyclonal antibody anti-PDE2A (1-50) is suitable for use in ELISA, Immunoprecipitation and Western Blot research applications.
<b>Applications</b>	ELISA, IP, WB
<b>Host/Source</b>	Rabbit
<b>Reactivity</b>	Human, Mouse, Rat

### PRODUCT PROPERTIES

<b>Clonality</b>	Polyclonal
<b>Clone ID</b>	
<b>Concentration</b>	0.5 µg/µl
<b>Conjugation</b>	Unconjugated
<b>Purification</b>	Affinity Purified
<b>Dilution Range</b>	WB: 1:500 ELISA: 1:10,000 IP: 1:200
<b>Formulation</b>	
<b>Isotype</b>	IgG
<b>Storage Instruction</b>	Store at -20°C for long term storage. Avoid freeze-thaw cycles.

### TARGET INFORMATION

<b>Gene ID</b>	5138
<b>Gene Symbol</b>	PDE2A
<b>Uniprot ID</b>	PDE2A_HUMAN
<b>Immunogen</b>	Synthetic peptide corresponding to region within amino acids 1-50 on N-terminus of human PDE2A2 protein.
<b>Immunogen Region</b>	1-50
<b>Specificity</b>	This antibody will detect PDE2A2 only.
<b>Immunogen Sequence</b>	



Western blot with Anti-PDE2A Antibody (STJ502253) on rat 1) Heart, 2) Testis, 3) Ovary, 4) Midbrain, 5) Cerebellum, 6) Spinal cord. Antibody at 1:250 dilution in buffer.

This product is suitable for in-vitro studies under the RESEARCH USE ONLY [RUO] licence. This product must not be used as for diagnostic or other medical purposes.  
St John's Laboratory Ltd, Knowledge Dock Business Centre, University Way, London, E16 2RD | Tel: 0208 223 3081