

Anti-PDE2A antibody (C-Term) (STJ502244)

STJ502244

GENERAL INFORMATION

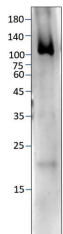
| | |
|--------------------------|--|
| Product Type | Primary antibodies |
| Short Description | Rabbit polyclonal antibody anti-PDE2A (C-Term) is suitable for use in Confocal Microscopy, ELISA, FRET, Immunocytochemistry, Immunofluorescence, Immunohistochemistry, Immunoprecipitation and Western Blot research applications. |
| Applications | CM, ELISA, FRET, ICC, IF, IHC, IP, WB |
| Host/Source | Rabbit |
| Reactivity | Human, Mouse, Rat |

PRODUCT PROPERTIES

| | |
|----------------------------|---|
| Clonality | Polyclonal |
| Clone ID | |
| Concentration | 0.7 µg/µl |
| Conjugation | Unconjugated |
| Purification | Affinity Purified |
| Dilution Range | WB: 1:250-1:1, 000 DB: 1:10, 000 ELISA: 1:10, 000 IP: 1:200 IHC: 1:250-1:1, 000 ICC: 1:250-1:1, 000 IF: 1:150-1:1, 000 CFM: 1:250-1:1, 000 |
| Formulation | |
| Isotype | IgG |
| Storage Instruction | Store at -20°C for long term storage. Avoid freeze-thaw cycles. |

TARGET INFORMATION

| | |
|---------------------------|---|
| Gene ID | |
| Gene Symbol | |
| Uniprot ID | |
| Immunogen | Synthetic peptide corresponding to unique C-terminal amino acid sequence on PDE2A gene. |
| Immunogen Region | C-Term |
| Specificity | This antibody will label PDE2A1, PDE2A2, PDE2A3 and PDE2A4 variants. |
| Immunogen Sequence | |



Western blot with Anti-PDE2A Antibody (STJ502244) with recombinant PDE2A1. 10ng protein per lane. Antibody at 1:500 dilution in buffer.

This product is suitable for in-vitro studies under the RESEARCH USE ONLY [RUO] licence. This product must not be used as for diagnostic or other medical purposes.
St John's Laboratory Ltd, Knowledge Dock Business Centre, University Way, London, E16 2RD | Tel: 0208 223 3081