

## Anti-PDE12 antibody (570-620) (STJ502221)

STJ502221

### GENERAL INFORMATION

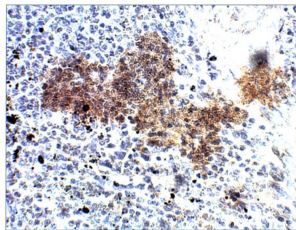
<b>Product Type</b>	Primary antibodies
<b>Short Description</b>	Rabbit polyclonal antibody anti-PDE12 (570-620) is suitable for use in ELISA, Immunohistochemistry, Immunoprecipitation and Western Blot research applications.
<b>Applications</b>	ELISA, IHC, IP, WB
<b>Host/Source</b>	Rabbit
<b>Reactivity</b>	Human, Monkey, Rat

### PRODUCT PROPERTIES

<b>Clonality</b>	Polyclonal
<b>Clone ID</b>	
<b>Concentration</b>	0.5 µg/µl
<b>Conjugation</b>	Unconjugated
<b>Purification</b>	Affinity Purified
<b>Dilution Range</b>	WB: 1:500 ELISA: 1:10,000 IP: 1:200 IHC: 1:100
<b>Formulation</b>	
<b>Isotype</b>	IgG
<b>Storage Instruction</b>	Store at -20°C for long term storage. Avoid freeze-thaw cycles.

### TARGET INFORMATION

<b>Gene ID</b>	<a href="#">201626</a>
<b>Gene Symbol</b>	<a href="#">PDE12</a>
<b>Uniprot ID</b>	<a href="#">PDE12_HUMAN</a>
<b>Immunogen</b>	Synthetic peptide taken within amino acid region 570-620 on human PDE12 protein.
<b>Immunogen Region</b>	570-620
<b>Specificity</b>	
<b>Immunogen Sequence</b>	



Immunohistochemistry of baboon spleen with Anti-PDE12 primary antibody (STJ502221) at 1:100 dilution in Buffer. Section was treated with DAB and Haematoxylin stain. Magnification is at 40X.