

## Anti-PDE11A antibody (454-468) (STJ502209)

STJ502209

### GENERAL INFORMATION

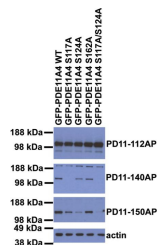
<b>Product Type</b>	Primary antibodies
<b>Short Description</b>	Rabbit polyclonal antibody anti-PDE11A (454-468) is suitable for use in Confocal Microscopy, ELISA, Immunocytochemistry, Immunofluorescence, Immunohistochemistry, Immunoprecipitation and Western Blot research applications.
<b>Applications</b>	CM, ELISA, ICC, IF, IHC, IP, WB
<b>Host/Source</b>	Rabbit
<b>Reactivity</b>	Human, Mouse, Rat

### PRODUCT PROPERTIES

<b>Clonality</b>	Polyclonal
<b>Clone ID</b>	
<b>Concentration</b>	0.68 µg/µl
<b>Conjugation</b>	Unconjugated
<b>Purification</b>	Affinity Purified
<b>Dilution</b>	WB: 1:500
<b>Range</b>	DB: 1:10, 000 ELISA: 1:10, 000 IP: 1:250 IHC: 1:250 ICC: 1:250 IF: 1:250 CFM: 1:250
<b>Formulation</b>	
<b>Isotype</b>	IgG
<b>Storage</b>	Store at -20°C for long term storage. Avoid freeze-thaw cycles.
<b>Instruction</b>	

### TARGET INFORMATION

<b>Gene ID</b>	50940
<b>Gene Symbol</b>	PDE11A
<b>Uniprot ID</b>	PDE11_HUMAN
<b>Immunogen</b>	Synthetic peptide conjugated to KLH, corresponding to C terminal amino acids 454-468 of human PDE11A.
<b>Immunogen Region</b>	454-468
<b>Specificity</b>	This antibody does not cross-react with any of the members of the PDE family. This antibody is common to all PDE11A variants including PDE11A1-PDE11A4.
<b>Immunogen Sequence</b>	



Western blot with Anti-PDE11A Antibody (STJ502209)

This product is suitable for in-vitro studies under the RESEARCH USE ONLY [RUO] licence. This product must not be used as for diagnostic or other medical purposes.  
St John's Laboratory Ltd, Knowledge Dock Business Centre, University Way, London, E16 2RD | Tel: 0208 223 3081