

## Anti-Phospho-CACNB2 antibody (600-655) (STJ502190)

STJ502190

### GENERAL INFORMATION

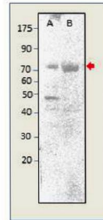
<b>Product Type</b>	Primary antibodies
<b>Short Description</b>	Rabbit polyclonal antibody anti-Phospho-CACNB2 (600-655) is suitable for use in Flow Cytometry, ELISA, Immunoprecipitation and Western Blot research applications.
<b>Applications</b>	FC, ELISA, IP, WB
<b>Host/Source</b>	Rabbit
<b>Reactivity</b>	Human, Mouse, Rat

### PRODUCT PROPERTIES

<b>Clonality</b>	Polyclonal
<b>Clone ID</b>	
<b>Concentration</b>	0.6 µg/µl
<b>Conjugation</b>	Unconjugated
<b>Purification</b>	Affinity Purified
<b>Dilution Range</b>	WB: 1:500 DB: 1:10, 000 ELISA: 1:10, 000 IP: 1:200
<b>Formulation</b>	
<b>Isotype</b>	IgG
<b>Storage Instruction</b>	Store at -20°C for long term storage. Avoid freeze-thaw cycles.

### TARGET INFORMATION

<b>Gene ID</b>	116600
<b>Gene Symbol</b>	Cacnb2
<b>Uniprot ID</b>	CACB2_RAT
<b>Immunogen</b>	Synthetic peptide taken within amino acid region 600-655 on rat CACNB2 protein.
<b>Immunogen Region</b>	600-655
<b>Specificity</b>	
<b>Immunogen Sequence</b>	



Western blot with Anti-Phospho-CACNB2 Antibody (STJ502190) with ear cells (A) and PCCB2 peptide (B). Antibody at 1:500 dilution in buffer.

This product is suitable for in-vitro studies under the RESEARCH USE ONLY [RUO] licence. This product must not be used as for diagnostic or other medical purposes.  
St John's Laboratory Ltd, Knowledge Dock Business Centre, University Way, London, E16 2RD | Tel: 0208 223 3081