

Anti-PAX5 antibody (1-50) (STJ502155)

STJ502155

GENERAL INFORMATION

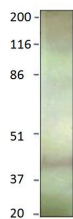
Product Type	Primary antibodies
Short Description	Rabbit polyclonal antibody anti-PAX5 (1-50) is suitable for use in ELISA and Western Blot research applications.
Applications	ELISA, WB
Host/Source	Rabbit
Reactivity	Human

PRODUCT PROPERTIES

Clonality	Polyclonal
Clone ID	
Concentration	0.65-0.75 µg/µl
Conjugation	Unconjugated
Purification	Affinity Purified
Dilution Range	WB: 1:500 DB: 1:10, 000 ELISA: 1:10, 000
Formulation	
Isotype	IgG
Storage Instruction	Store at -20°C for long term storage. Avoid freeze-thaw cycles.

TARGET INFORMATION

Gene ID	5079
Gene Symbol	PAX5
Uniprot ID	PAX5_HUMAN
Immunogen	Synthetic peptide taken within amino acid region 1-50 on human PAX5 protein.
Immunogen Region	1-50
Specificity	
Immunogen Sequence	



Western blot with Anti-PAX5 Antibody (STJ502155) with PAX5 peptide. Antibody at 1:500 dilution in buffer.