

Anti-PAX2 antibody (255-305) (STJ502128)

STJ502128

GENERAL INFORMATION

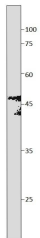
Product Type	Primary antibodies
Short Description	Rabbit polyclonal antibody anti-PAX2 (255-305) is suitable for use in ELISA, Immunohistochemistry, Immunoprecipitation and Western Blot research applications.
Applications	ELISA, IHC, IP, WB
Host/Source	Rabbit
Reactivity	Human, Mouse, Rat

PRODUCT PROPERTIES

Clonality	Polyclonal
Clone ID	
Concentration	0.5 µg/µl
Conjugation	Unconjugated
Purification	Affinity Purified
Dilution Range	WB: 1:250-1:500 ELISA: 1:10, 000 IP: 1:200
Formulation	
Isotype	IgG
Storage	Store at -20°C for long term storage. Avoid freeze-thaw cycles.
Instruction	

TARGET INFORMATION

Gene ID	5076
Gene Symbol	PAX2
Uniprot ID	PAX2_HUMAN
Immunogen	Synthetic peptide taken within amino acid region 255-305 on human PAX2 protein.
Immunogen Region	255-305
Specificity	
Immunogen Sequence	



Western blot with Anti-PAX2 Antibody (STJ502128) on rat spinal cord. Antibody at 1:250 dilution in 1% milk.