

Anti-PAX2 antibody (1-50) (STJ502125)

STJ502125

GENERAL INFORMATION

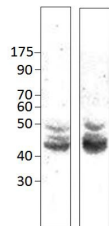
Product Type	Primary antibodies
Short Description	Rabbit polyclonal antibody anti-PAX2 (1-50) is suitable for use in ELISA, Immunoprecipitation and Western Blot research applications.
Applications	ELISA, IP, WB
Host/Source	Rabbit
Reactivity	Human, Mouse, Rat

PRODUCT PROPERTIES

Clonality	Polyclonal
Clone ID	
Concentration	0.75-0.95 µg/µl
Conjugation	Unconjugated
Purification	Affinity Purified
Dilution Range	WB: 1:500 ELISA: 1:10, 000 IP: 1:200
Formulation	
Isotype	IgG
Storage Instruction	Store at -20°C for long term storage. Avoid freeze-thaw cycles.

TARGET INFORMATION

Gene ID	5076
Gene Symbol	PAX2
Uniprot ID	PAX2_HUMAN
Immunogen	Synthetic peptide taken within amino acid region 1-50, 255-305, and 310-360 on human PAX2 protein.
Immunogen Region	1-50
Specificity	
Immunogen Sequence	



Western blot with Anti-PAX2 Antibody (STJ502125) with Left) MCF7 cells and Right) PAX2 peptide on at 1:500 dilution in buffer.