

## Anti-PAR2 antibody (300-370) (STJ502113)

STJ502113

### GENERAL INFORMATION

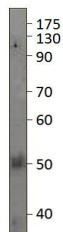
<b>Product Type</b>	Primary antibodies
<b>Short Description</b>	Rabbit polyclonal antibody anti-PAR2 (300-370) is suitable for use in ELISA, Immunohistochemistry, Immunoprecipitation and Western Blot research applications.
<b>Applications</b>	ELISA, IHC, IP, WB
<b>Host/Source</b>	Rabbit
<b>Reactivity</b>	Chimpanzee, Human, Monkey, Mouse, Rat

### PRODUCT PROPERTIES

<b>Clonality</b>	Polyclonal
<b>Clone ID</b>	
<b>Concentration</b>	0.62 µg/µl
<b>Conjugation</b>	Unconjugated
<b>Purification</b>	Affinity Purified
<b>Dilution Range</b>	WB: 1:250 ELISA: 1:15, 00-1:20, 000 IP: 1:200 IHC: 1:100 ICC: 1:100 IF: 1:100
<b>Formulation</b>	
<b>Isotype</b>	IgG
<b>Storage Instruction</b>	Store at -20°C for long term storage. Avoid freeze-thaw cycles.

### TARGET INFORMATION

<b>Gene ID</b>	14063
<b>Gene Symbol</b>	F2r1
<b>Uniprot ID</b>	PAR2_MOUSE
<b>Immunogen</b>	Synthetic peptide taken within amino acid region 300-370 of mouse PAR2.
<b>Immunogen Region</b>	300-370
<b>Specificity</b>	This antibody is directed against a cytoplasmic region of PAR2.
<b>Immunogen Sequence</b>	



Western blot with Anti-PAR2 Antibody (STJ502113) with PAR2 peptide on at 1:500 dilution in buffer.