

Anti-Phospho-Annexin A2 antibody (1-50) (STJ502104)

STJ502104

GENERAL INFORMATION

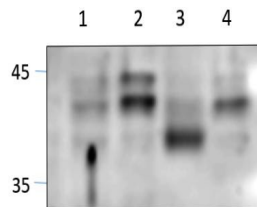
Product Type	Primary antibodies
Short Description	Rabbit polyclonal antibody anti-Phospho-Annexin A2 (1-50) is suitable for use in ELISA, Immunoprecipitation and Western Blot research applications.
Applications	ELISA, IP, WB
Host/Source	Rabbit
Reactivity	Human, Mouse, Rat

PRODUCT PROPERTIES

Clonality	Polyclonal
Clone ID	
Concentration	0.55-0.75 µg/µl
Conjugation	Unconjugated
Purification	Affinity Purified
Dilution Range	WB: 1:500 DB: 1:10, 000 ELISA: 1:10, 000 IP: 1:200
Formulation	
Isotype	IgG
Storage Instruction	Store at -20°C for long term storage. Avoid freeze-thaw cycles.

TARGET INFORMATION

Gene ID	302
Gene Symbol	ANXA2
Uniprot ID	ANXA2_HUMAN
Immunogen	Synthetic peptide corresponding to Human Annexin A2 protein with phosphorylated serine 12 and threonine 18 residues. Synthetic peptide was taken within amino acid region 1-50.
Immunogen Region	1-50
Specificity	
Immunogen Sequence	



Western blot with Anti-Phospho-Annexin A2 Antibody (STJ502104) on rat 1) Midbrain, 2) Cerebellum, 3) Spinal Cord, 4) Cerebral cortex. Antibody at 1:250 dilution in buffer.

This product is suitable for in-vitro studies under the RESEARCH USE ONLY [RUO] licence. This product must not be used as for diagnostic or other medical purposes.
St John's Laboratory Ltd, Knowledge Dock Business Centre, University Way, London, E16 2RD | Tel: 0208 223 3081