

Anti-PANX1 antibody (STJ502101)

STJ502101

GENERAL INFORMATION

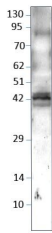
Product Type	Primary antibodies
Short Description	Rabbit polyclonal antibody anti-PANX1 is suitable for use in ELISA and Western Blot research applications.
Applications	ELISA, WB
Host/Source	Rabbit
Reactivity	Human

PRODUCT PROPERTIES

Clonality	Polyclonal
Clone ID	
Concentration	0.55 µg/µl
Conjugation	Unconjugated
Purification	Affinity Purified
Dilution Range	WB: 1:500 DB: 1:10, 000 ELISA: 1:10, 000
Formulation	
Isotype	IgG
Storage Instruction	Store at -20°C for long term storage. Avoid freeze-thaw cycles.

TARGET INFORMATION

Gene ID	24145
Gene Symbol	PANX1
Uniprot ID	PANX1_HUMAN
Immunogen	Synthetic peptide taken within amino acid region from human Pannexin 1 protein
Immunogen Region	
Specificity	
Immunogen Sequence	



Western blot with Anti-PANX1 Antibody (STJ502101) on 60-85µg rat spinal cord at 1:500 dilution in buffer from a 12% SDS gel.

This product is suitable for in-vitro studies under the RESEARCH USE ONLY [RUO] licence. This product must not be used as for diagnostic or other medical purposes.
St John's Laboratory Ltd, Knowledge Dock Business Centre, University Way, London, E16 2RD | Tel: 0208 223 3081